

Distributed by:

Lab Unlimited
CARL STUART GROUP

Tallaght Business Park
Whitestown, Dublin 24,
Ireland
D24 RFK3

Tel: (01) 4523432
Fax: (01) 4523967
E-mail: info@labunlimited.com
Web: www.labunlimited.com

Quatro House, Frimley Road,
Camberley,
United Kingdom
GU16 7ER

Tel: 08452 30 40 30
Fax: 08452 30 50 30
E-mail: info@labunlimited.co.uk
Web: www.labunlimited.co.uk

EVE™

Automatic cell counter



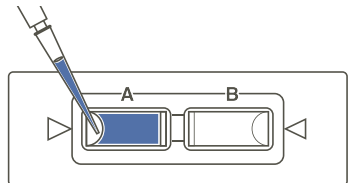
Nano**EnTek**

EVE™, Automatic cell counter

Instructions for using EVE™, Automatic cell counter described below.
For detailed instructions, refer to the manual supplied with EVE™ or
download the manual from www.nanoentek.com.

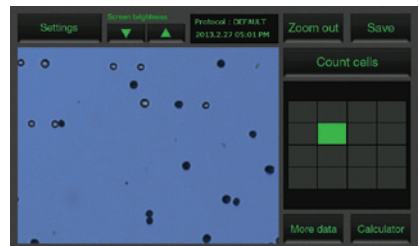
1. Load sample & insert slide

- ▶ Mix well the 10 μ L of sample and the 10 μ L of 0.4% trypan blue stain using a pipette.
- ▶ Load 10 μ L of the sample mixture on EVE™ Cell counting slide (side A) using a pipette.
- ▶ Insert the slide into the slide port of the instrument, sample side (side A) first.



2. Optimize image

- ▶ Press **Zoom** button and adjust the image using the Focus knob.
☞ Check the reference image for correct analysis. (next page)
- ▶ Use the grid to navigate the slide and check the image in several fields.
- ▶ Lock focusing using **Focus lock** knob if necessary



3. Count cells

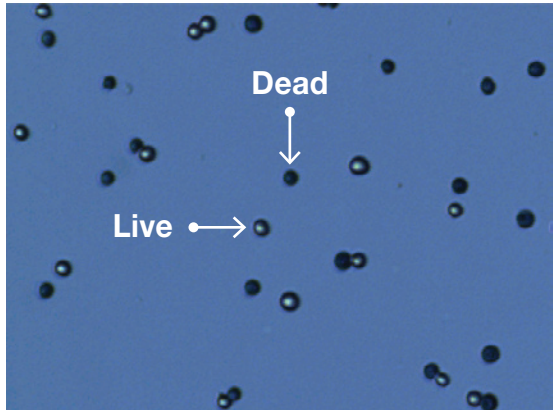
- ▶ Press **Count cells** button to obtain the results.
- ▶ Record cell count.
- ▶ Press **More data** button to see data details as well as graphical representation of data.
- ▶ To read the second side of slide (side B), remove and turn around the slide, and repeat the 1 ~ 3 procedures with the side B.



The reference images for correct analysis

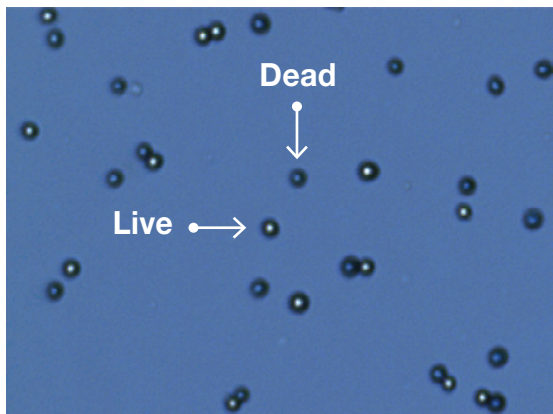
<Correct image>

Live cells have bright centers and dark edges.



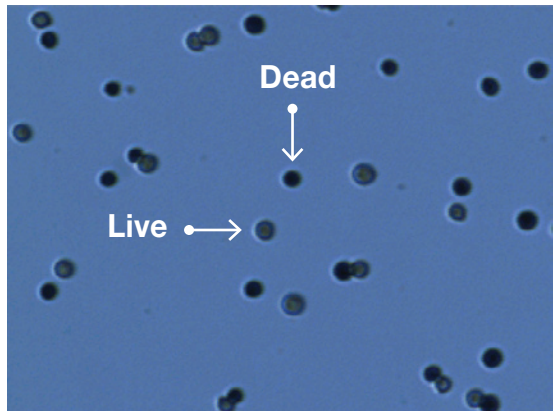
<Incorrect image 1>

Dead cells have bright, blue centers and are counted as the live cells.



<Incorrect image 2>

Live cells have dark centers and are counted as the dead cells.



EVE™ *Automatic cell counter*

Distributed by:

Lab Unlimited
CARL STUART GROUP

Tallaght Business Park
Whitestown, Dublin 24,
Ireland
D24 RFK3

Tel: (01) 4523432
Fax: (01) 4523967
E-mail: info@labunlimited.com
Web: www.labunlimited.com

Quatro House, Frimley Road,
Camberley,
United Kingdom
GU16 7ER

Tel: 08452 30 40 30
Fax: 08452 30 50 30
E-mail: info@labunlimited.co.uk
Web: www.labunlimited.co.uk